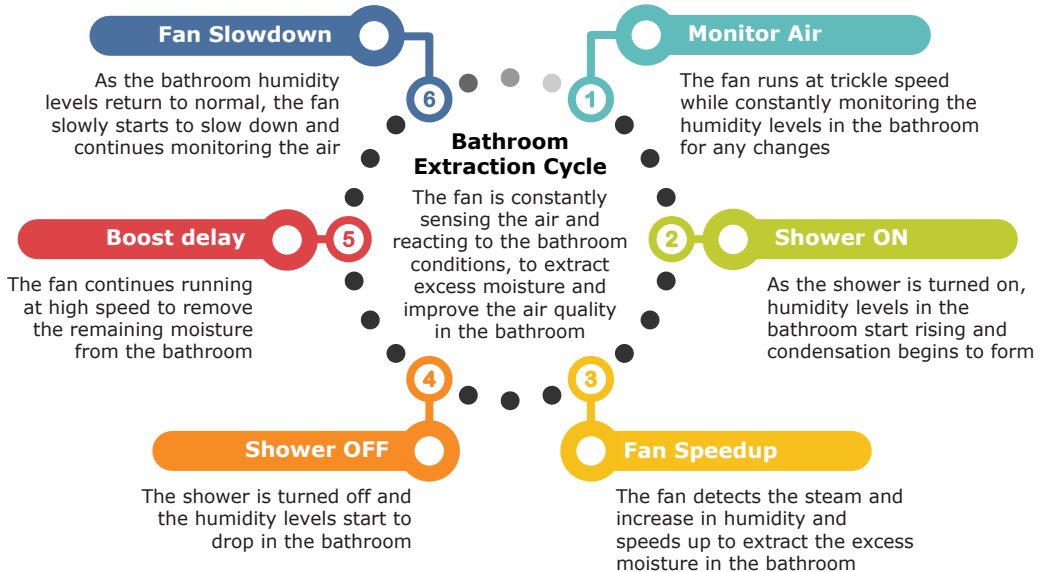


Automatic Bathroom Extraction Fans

EVOAQ Bathroom Extraction fans work by running at a low trickle speed and constantly monitoring the moisture levels within the bathroom environment.

In-built controls and sensors in the fan control the fan speed to extract any excess moisture and protect your bathroom.



Start-up Boost

30 seconds after being plugged in, the fan enters a 2-minute startup boost on high speed to ensure bad or stale air is removed from the bathroom, before the fan slowly slows down and begins its Bathroom Extraction Cycle

Boost Switch - optional

A remote low-voltage switch may be wired into selected fan models as a 'boost switch'. If the switch is on, the fan runs at high speed. When the switch is turned off again, the fan slowly slows down and resumes its Bathroom Extraction Cycle

**Fully Automatic
Bathroom Extraction.
Just Plug and Play.**



Like **EVOAQ**
on Facebook

Follow **evoaqnz**
on Instagram

